

ANOTHER

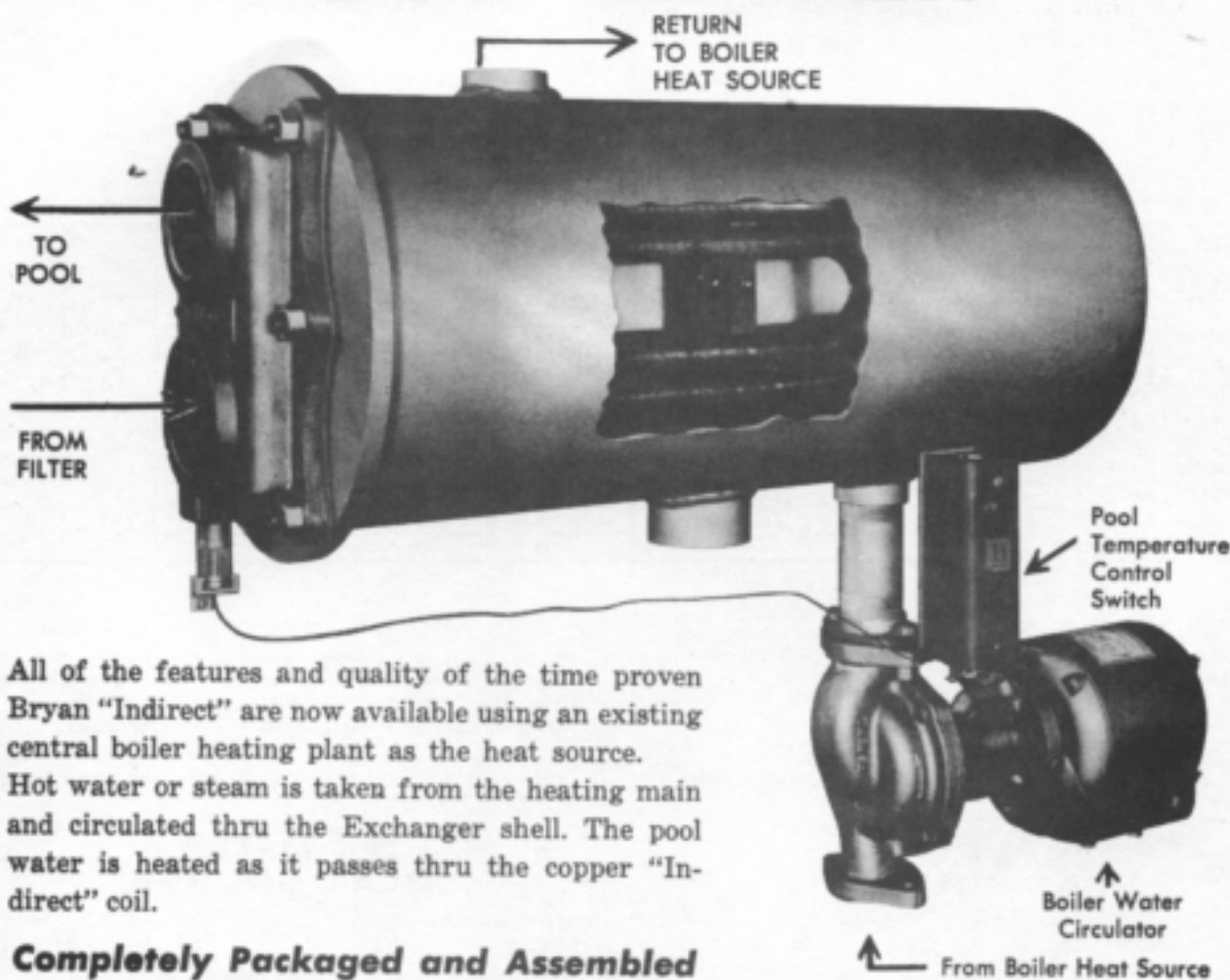
**Bryan**

"INDIRECT" FIRST!

FORM 2000-8

Rev. 7-85

# Heat Exchanger Type POOL HEATER



All of the features and quality of the time proven Bryan "Indirect" are now available using an existing central boiler heating plant as the heat source.

Hot water or steam is taken from the heating main and circulated thru the Exchanger shell. The pool water is heated as it passes thru the copper "Indirect" coil.

**Completely Packaged and Assembled**

**Bryan**  
COPPER TUBE  
INDIRECT  
POOL HEATERS  
**Boilers**

**SAVE**

**No gas or oil piping required**

**No vent or chimney required**

**Lower initial cost**

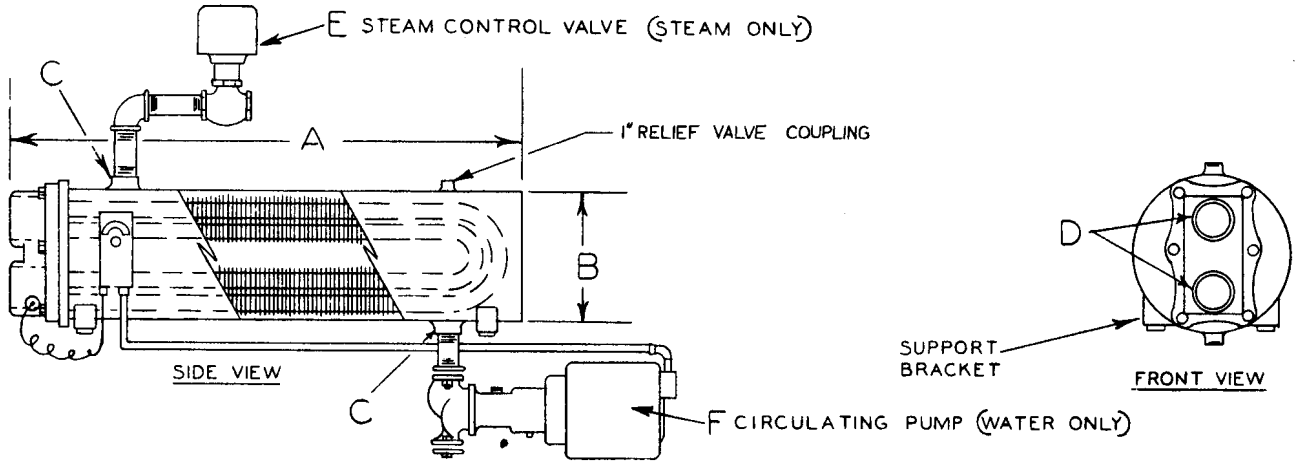
**Less space required**

**BRYAN STEAM CORPORATION**  
PERU, INDIANA 46970

Particular advantages for apartment houses, motels, hotels, Y.M.C.A.s and other commercial applications. Bryan has the complete line — Gas Fired — Oil Fired — Electric — Heat Exchangers.

See your Bryan distributor for all of your Pool Heating needs.

# SPECIFICATIONS AND DIMENSIONS



Heater Model	HEATER RATING				STANDARD COIL MODEL (See form 1232 for pressure drop information)	DIMENSIONS					CIRCULATOR SIZING				
	OUTPUT — BTU'S PER HR.					A Length	B Diameter	C Shell Tappings	D Pool Water Tappings	E Steam Valve Size-IPS (Note 2)	Maximum Flow, GPM Through Shell	Shell ΔT	Circ. Model	Size	Motor HP
	HEAT SOURCE														
	WATER TEMP.		STEAM PRESS.												
	180°	210°	2#	10#											
SH-16-15P	200,000	280,000	400,000	480,000	B2-16-15	20	11	2	2	1½	19	30° F	TC	1"	¼
SH-16-32P	400,000	560,000	800,000	960,000	B2-16-32	37	11	2½	2	2	37	30°	22C	2"	¼
SH-24-32P	600,000	840,000	1,200,000	1,440,000	B2-24-32	37	11	2½	2	2½	56	30°	22½C	2½"	¼
SH-24-42P	800,000	1,120,000	1,600,000	1,920,000	B2-24-42	47	11	2½	2	3	75	30°	RC-O	3"	½
SH-24-54P	1,000,000	1,400,000	2,000,000	2,400,000	B2-24-54	59	11	2½	2	3	94	30°	RC-1	3"	½
SH-40-48P	1,500,000	2,100,000	3,000,000	3,600,000	D2-40-51	56	13	3	2½	3	141	30°	TV2G	3"	1
SH-40-63P	2,000,000	2,800,000	— —	— —	D2-40-64	69	13	3	2½	-	187	30°	TV2G	3"	1½
SH-40-77P	2,500,000	3,500,000	— —	— —	D2-40-78	83	13	3	2½	-	234	30°	TV2G	3"	2
SH-40-99P	3,000,000	4,200,000	— —	— —	D2-40-100	105	13	3	2½	-	281	30°	TV2G	3"	3

## EQUIPMENT FURNISHED

Steel heat exchanger shell — (125PSI-ASME), Copper heat exchanger with brass head, Pool water temperature control aquastat to control heat source circulating pump or steam control valve, assembled and wired.

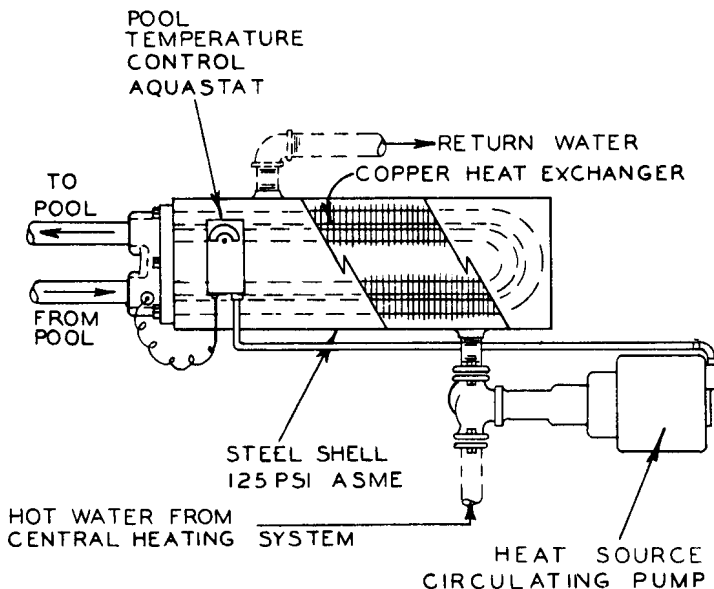
## OPTIONAL EQUIPMENT

Circulating pump, steam control valve, thermometer, steam pressure gauge, steam strainer.

## NOTE

1. Pump sizing based upon maximum temperature drop thru exchanger of 30°F, and maximum head loss in piping between boiler and heater of 10 ft. H<sub>2</sub>O.  
For other conditions contact factory representative.
2. Steam valve sizing based upon 5 PSI minimum steam pressure and ½-PSI return pressure.

## WATER HEAT SOURCE



## STEAM HEAT SOURCE

